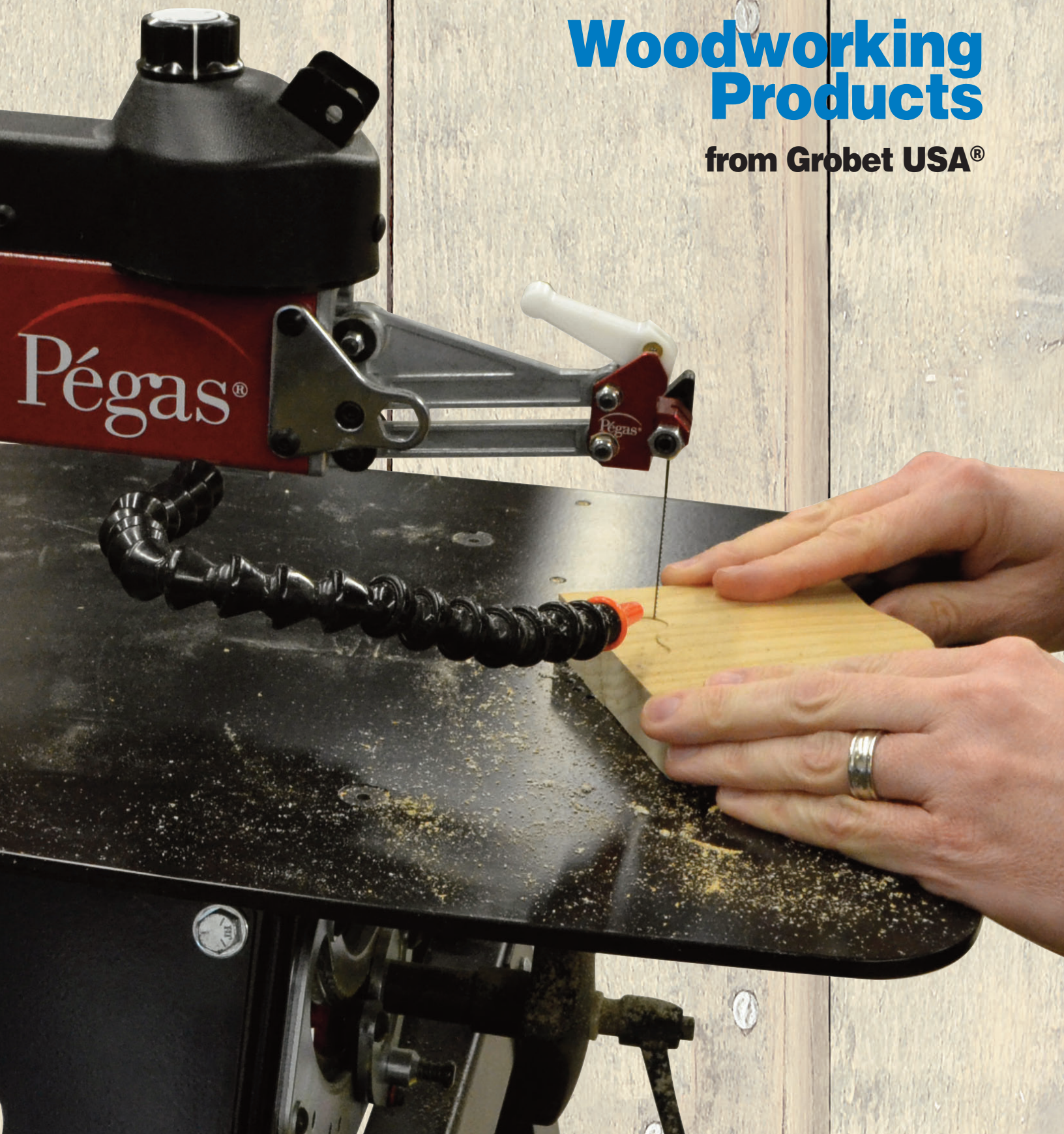




# Woodworking Products

from Grobet USA®







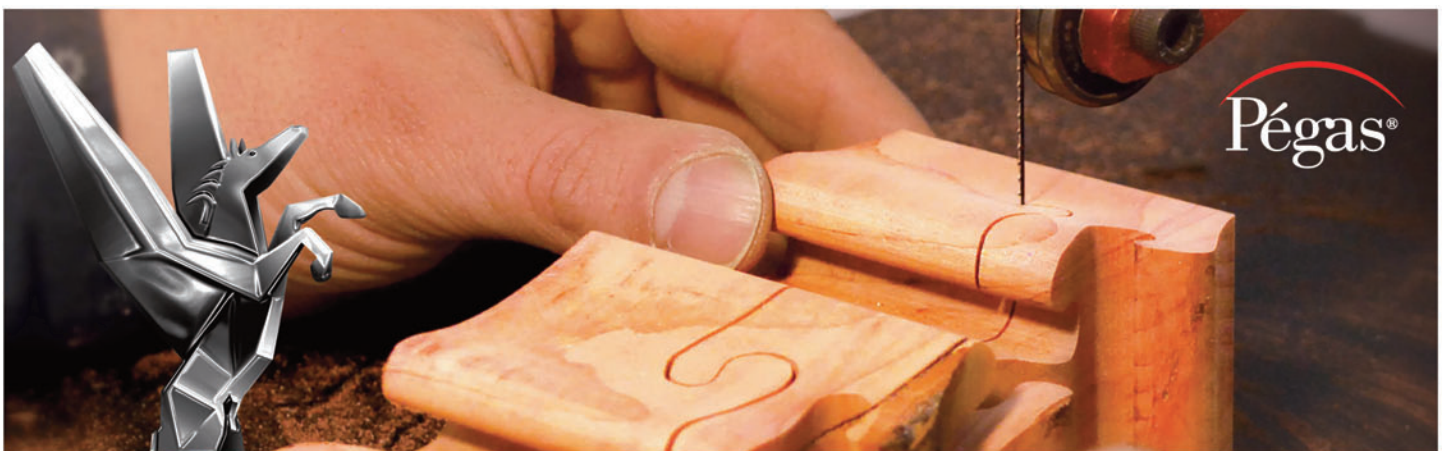
Grobet USA® is recognized worldwide for excellence, quality, and reliability. Our core values are loyalty, service and commitment to our customers. We offer a complete line of high quality precision tools and equipment and provide value added service by long-term partnerships with companies in alignment with our core values and dedication.

In 1969, Grobet established Scies Miniatures in Vallorbe, Switzerland, which is the uncontested worldwide leader in the jewelers' sawblade market. Through Scies Miniatures, we have developed the Pégas® brand of woodworker's scroll sawblades – simply the best and most reliable sawblades in the market.

All of our blades are manufactured from the best available carbon steel. The teeth are machined and individually stamped using state-of-the-art equipment. They are then heat treated to ensure optimum durability and flexibility. Our full line of Pégas sawblades includes Regular, Spiral, Skip, Double skip, Modified Geometry, Pinned, Metal working and Band Saws.

We are continuing to grow our Pégas® line and are proud to introduce our Pégas Scroll Band Saws and Scroll Saw machines. They are already extremely popular in Europe. We have also added Blade Chuck Heads and Adaptor Sets as well as Scroll Sandpaper.

Please visit our website at [www.grobetusa.com/woodworking](http://www.grobetusa.com/woodworking) for our full line of tools and equipment.

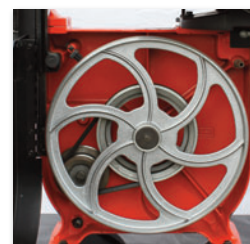


## PÉGAS® SCROLL BAND SAW

The Pégas® Scroll Band Saw is a precision machine, specially designed for use with Pégas scroll band saw blades, the finest and most accurate blades ever produced. Starting at slightly more than 1/32" wide and as thin as .0142" thick and ranging up to 1/8" wide and 0.197" thick. The Pégas blades are the thinnest band saw blades in the market. This unique combination was developed for all user levels from hobbyist to skilled professional.

- Stable cast-iron frame for increased longevity
- Balanced aluminum wheels minimize vibrations
- Two speeds
- Blade protection guard
- Safety switch system
- Cast-iron table with 40° tilt capability
- Suction system is placed directly under the work table to achieve optimal efficiency
- Comes with #9 and #12 blades

No. 90.700



The Universal ball bearing No. 92.001 is delivered with the Scroll Band Saw. Other sizes can be purchased separately for specific band saw blade sizes. Determine the matching ball bearings using the chart on Page 3.



## PÉGAS 21" SCROLL SAW

Key Features:

- Head tilts left and right (45°/35°)
- Upper Arm can be raised
- Speed Regulator adjusts from 400 to 1500 rpm
- Blower and Dust Collector

Unique Features:

- Extra-light, easy-to-use Blade Chuck Head
- Special coating on table enables wood to glide easily
- Reinforced chassis reduces vibration
- Improved mechanical parts reduce stress



**THE MOST QUIET, DURABLE, SMOOTH OPERATING SCROLL SAW MACHINE AVAILABLE ON THE MARKET**

The Pégas® Scroll Saw was developed in Switzerland and made in Taiwan to the rigorous specifications and quality requirements of Scies Miniatures, a division of Grobet USA.

No. 90.750 - Scroll saw  
No. 90.751 - Scroll saw stand  
No. 90.752 - Foot control

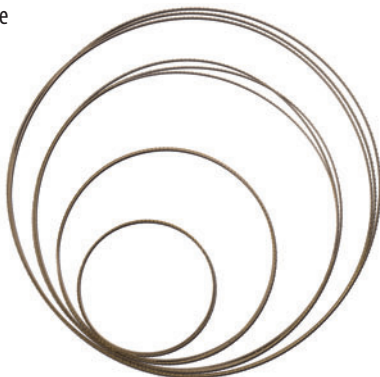
Each Scroll includes a sample set of 18 Pégas blades, instructions, a blade selection chart, and spare parts for the blade chuck head.

## PÉGAS® SCROLL BAND SAW BLADES & BEARINGS

These unique blades are manufactured on current state-of-the-art equipment, using the best available steel in the world. Our 50 years of experience in precision blade manufacturing enables us to offer an innovative, efficient product that performs beyond the expectations of the most demanding professionals.

We have carefully studied the geometry of the Pegas blades to eliminate vibrations during the cutting process. The results are incredible. The efficient and accurate cutting of these blades produces a high-quality finish for hard and soft wood of thickness up to 6" (150 mm)-thick.

These precision blades enable risk-free cutting of very tight curves with radii below 3/32" (2 mm). The various blade dimensions meet all of your needs regardless of the wood species, width, and complexity of the items to be sawn.



### Ball Bearing Matching Chart

No.	Part No.	Blade thickness inch (mm)	Cutting trace inch (mm)	Blade width inch (mm)	Blade width Fractional	TPI	D/cm	Match Bearing
5	91.005	.0142 (0.36)	.0157 (0.40)	.0402 (1.02)	1/32"	13.4	5.3	92.005
7	91.007	.0157 (0.40)	.0181 (0.46)	.0488 (1.24)	3/64"	11.8	4.6	92.007
9	91.009	.0173 (0.44)	.0204 (0.52)	.0527 (1.34)	1/16"	10.5	4.1	92.009
11	91.011	.0197 (0.50)	.0244 (0.62)	.0709 (1.80)	5/64"	9.2	3.6	92.011
12	91.012	.0197 (0.50)	.0248 (0.63)	.0787 (2.00)	3/32"	8.9	3.5	92.011
14	91.014	.0197 (0.50)	.0256 (0.65)	.1181 (3.00)	1/8"	8.2	3.2	92.014

## PÉGAS® BLADE CHUCK HEADS

*Developed in Switzerland by Scies Miniatures/Pégas in collaboration with the HEIG Engineering School in Yverdon.*

Tests and studies demonstrate that the reduced weight of these Heads directly relates to reduced vibrations of the machine, which, in turn, improves its service life and the life of the scroll saw.

These new Heads are manufactured from an aeronautical grade of aluminum, in which durability and weight are optimal. Therefore, the new Heads are 40% lighter than the original cast aluminum heads and vibration is reduced to a minimum. The compact design is user friendly and protects the mechanical parts of the scroll saw. Assembly of these new Heads is simple and fast.

- More compact • 40% lighter • Reduces vibration • Reduces stress on the machine
- Increases life of the Scroll Saw • Makes changing blades easier and faster

### Blade Chuck Head set for use with popular scroll saw brands:

- Excalibur EX16, EX21, and EX30
- Excelsior 16, 21, and 30 inches • King Industrial 16, 21, 30 inches
- Seyco ST-21 • Jet JWSS-16, JWSS-22
- Axminster Trade Series EX-16, EX-21, and EX-30
- Carbatec CTEX-16CEC or SS-400C, CTEX-21CEC or SS-530C and CTEX-30CEC or SS-760C

No. 90.300

### Blade Chuck Lower Head for Jet scroll saws JWSS-16, JWSS-22

This set has only the lower blade clamp for easy, fast, and precise blade mounting. It allows the user to keep the original JET upper blade clamp. This is a perfect option for BOTTOM feeding scrollers. (To change both upper and lower JET clamps, use set No. 90.300 above.)

No. 90.302



### Blade Chuck Head set for Dewalt and Delta Scroll Saws

This set is suitable for use with Dewalt DW788-20in and Delta 40-694-20in. Includes upper and lower clamps and works perfectly for both BOTTOM and TOP feeding scrollers.

No.90.301



Pégas®



## SWISS CUT® SAW FRAME

Frame for 5" pinned blades

Designed with "S" bends to the frame. This saw provides unobstructed viewing directly over the area to be cut. The frame is equipped with an ergonomic pistol grip handle fabricated with reinforced fiber-filled plastic. Knurled thumbscrew provides easy-to-use blade tension control. Manufactured at our factory in Vallorbe, Switzerland.

No. 49.800



## SWISS MADE ADJUSTABLE SAW FRAMES

Manufactured at our factory in Vallorbe, Switzerland. this revolutionary lightweight design is a perfectly balanced saw frames. The ergonomic handle reduces fatigue and provides greater dexterity. The patented blade-lock design eases blade insertion, maintains perfect alignment and eliminates wobble which reduces blade loss during use. Precision-made at our Swiss factory of the highest quality spring steel with non-glare finish. Set screws can be used on either the left or right side of the frame according to your preference. Blade tightening screw must be opened wide enough to allow the blades to be inserted all the way.

No. 49.724 – 4" deep

## PÉGAS® SCROLL SAW SANDERS

Perfect for fine sanding and rapid burr removal from wood

- Quality sandpaper developed by Scies Miniatures, Switzerland
- Manufactured in strict accordance with Scies specifications
- Plain ends without pins
- Available grits: 80, 120, 240, and 320
- Two width selections: 1/4" (6 mm) and 1/2" (12 mm)
- Fits perfectly on Pegas, King Industrial, Excelsior, Jet, Seyco, Excalibur, and Axminster Scroll Saws
- Also fits other 5" Scroll Saws, but adjustment of table holes and blade attachment may be needed.*
- 4 Sanders per pack



Pégas®

No.	Grit	Width
90.6080	80	1/4" (6 mm)
90.6120	120	1/4" (6 mm)
90.6240	240	1/4" (6 mm)
90.6320	320	1/4" (6 mm)
90.6SET	80/120/240/320	1/4" (6 mm)

No.	Grit	Width
90.12080	80	1/2" (12 mm)
90.12120	120	1/2" (12 mm)
90.12240	240	1/2" (12 mm)
90.12320	320	1/2" (12 mm)
90.12SET	80/120/240/320	1/2" (12 mm)



## SYNTHETIC BEESWAX

Apply to your blades or drill bits to reduce friction and burning for hardwoods. It will also prevent acrylic plastic from melting back together. You can also use it when cutting coins and other metals.

No. 26.100 1 oz. tube

No. 26.103 1 lb. cake

## PÉGAS SCROLL SAW BLADES

Our Pégas® brand, manufactured at our factory in Switzerland, delivers the highest quality scroll saw blades. Available by dozen or gross.



### MODIFIED GEOMETRY TEETH 5" (130 mm):

The Pégas® Modified Geometry Teeth (MGT) blades are reverse-tooth and are the best blade on the market. The innovated tooth design makes this blade EXTREMELY EFFICIENT. It tolerates aggressive feed rates, prevents overheating, and leaves a smooth finish with no splinters.

Qty 12	Qty 144	Size	Qty 12	Qty 144	Size	Qty 12	Qty 144	Size	Qty 12	Qty 144	Size
90.438	90.438B	2/OR	90.440	90.440B	3R	90.442	90.442B	7R	90.444	90.444B	12R
90.439	90.439B	1R	90.441	90.441B	5R	90.443	90.443B	9R			

### SPIRAL 5" (130 mm):

The Spiral blades feature teeth a full 360° around the blades allowing sawing in each direction.

The work does not have to be turned to make cuts, so sharp inside corners can be created. This also allows you to cut long pieces that cannot be turned on a 16" or 21" scroll saw.

Qty 12	Qty 144	Size	Qty 12	Qty 144	Size	Qty 12	Qty 144	Size	Qty 12	Qty 144	Size
90.500	90.500B	2/0	90.503	90.503B	2	90.506	90.506B	5	90.509	90.509B	8
90.501	90.501B	0	90.504	90.504B	3	90.507	90.507B	6			
90.502	90.502B	1	90.505	90.505B	4	90.508	90.508B	7			

### SUPER-SKIP 5" (130 mm):

Use the new Pégas® Super-Skip Sawblade to achieve a smooth finish from an aggressive blade.

Specially designed for hard and medium-hardwoods, Super-Skip blades also works perfectly on acrylic plastics if you reduce your speed. The spaces between the teeth of the Super-Skip blade are wider than the normal skip-tooth configuration. This enables the blade to cut very quickly, but leaves a smooth finish. The surface sawdust is whisked away and the edge remains clean.

Qty 12	Qty 144	Size	Qty 12	Qty 144	Size	Qty 12	Qty 144	Size	Qty 12	Qty 144	Size
90.579	90.579B	2/0	90.583	90.583B	3	90.587	90.587B	7	90.591	90.591B	11
90.580	90.580B	0	90.584	90.584B	4	90.588	90.588B	8	90.592	90.592B	12
90.581	90.581B	1	90.585	90.585B	5	90.589	90.589B	9			
90.582	90.582B	2	90.586	90.586B	6	90.590	90.590B	10			

### SKIP 5" (130 mm):

The skip-tooth blade is a nearly universal blade that can cut hard and medium-hard

woods. The space between the teeth does a good job of clearing out sawdust, and these blades can be used to cut intricate patterns and rough cutting work. While it doesn't cut as fast as some other blades (like the MGT and Double Skip), these are good general purpose blades that leave a smooth finish.

Qty 12	Qty 144	Size	Qty 12	Qty 144	Size	Qty 12	Qty 144	Size	Qty 12	Qty 144	Size
90.400	90.400B	2	90.404	90.404B	3	90.408	90.408B	7	90.412	90.412B	11
90.401	90.401B	0	90.405	90.405B	4	90.409	90.409B	8	90.413	90.413B	12
90.402	90.402B	1	90.406	90.406B	5	90.410	90.410B	9			
90.403	90.403B	2	90.407	90.407B	6	90.411	90.411B	10			

### SKIP REVERSE 5" (130 mm):

With a tooth configuration similar to the skip-tooth blade, these skip-reverse blades add reversed teeth to the bottom of the blade to prevent splinters and tear-out on the bottom side of the blank. These blades can make intricate cuts as well as do rough cutting work.

Qty 12	Qty 144	Size	Qty 12	Qty 144	Size	Qty 12	Qty 144	Size	Qty 12	Qty 144	Size
90.428	90.428B	3R	90.429	90.429B	5R	90.430	90.430B	7R	90.431	90.431B	9R

### DOUBLE SKIP 5" (130 mm):

With double the space between every two teeth, the Double Skip Blades produce a clean smooth surface while clearing sawdust away. This helps when cutting thick soft woods, such as the wood you'd use for compound-cut projects.

Qty 12	Qty 144	Size	Qty 12	Qty 144	Size	Qty 12	Qty 144	Size	Qty 12	Qty 144	Size
90.520	90.520B	2/0	90.524	90.524B	30	90.528	90.528B	7	90.532	90.532B	11
90.521	90.521B	0	90.525	90.525B	4	90.529	90.529B	8	90.533	90.533B	12
90.522	90.522B	1	90.526	90.526B	5	90.530	90.530B	9			
90.523	90.523B	2	90.527	90.527B	6	90.531	90.531B	10			

### DOUBLE REVERSE 5" (130 mm):

These blades are similar to the Double Skip Blades, but include a number of reversed teeth at the bottom to eliminate splinters.

Qty 12	Qty 144	Size	Qty 12	Qty 144	Size	Qty 12	Qty 144	Size
90.432	90.432B	5R	90.433	90.433B	7R	90.434	90.434B	9R

### REGULAR 5" (130 mm):

The universal tooth design makes this blade a good general purpose blade. Very strong and easy to use, but not recommended for tight turns.



Qty 12	Qty 144	Size
90.460	90.460B	25TPI
90.461	90.461B	20TPI

Qty 12	Qty 144	Size
90.462	90.462B	20TPI
90.464	90.464B	15TPI

Qty 12	Qty 144	Size
90.465	90.465B	10TPI

### METAL CUTTING 5" (130 mm):

The blade are specially designed and heat treated to cut ferrous and non-ferrous metals.

The teeth configuration allows very fine and precise cuts. These blades can be used by hand, with a frame, or on a scroll saw.



Qty 12	Qty 144	Size
90.540	90.540B	3/0
90.541	90.541B	2/0
90.542	90.542B	0

Qty 12	Qty 144	Size
90.543	90.543B	1
90.544	90.544B	2
90.545	90.545B	3

Qty 12	Qty 144	Size
90.546	90.546B	4
90.547	90.547B	5
90.548	90.548B	6

Qty 12	Qty 144	Size
90.549	90.549B	8

### PINNED SKIP 5" (130 mm):

The large and flat skip between teeth provides good chip removal and, therefore, reduces overheating. Good blade for fast cuts with easy patterns.



Qty 12	Qty 144	Size
90.480	90.480B	9TPI

Qty 12	Qty 144	Size
90.481	90.481B	18TPI

### PINNED SKIP 3" (75 mm):

Same as pinned Skip 5" but 3", adapted for some hobby saws.



Qty 12	Qty 144	Size
90.490	90.490B	18TPI

Qty 12	Qty 144	Size
90.491	90.491B	15TPI

### PINNED REGULAR 5" (130 mm):

Same as Regular 5" but WITH PINS.



Qty 12	Qty 144	Size
90.475	90.475B	20TPI

Qty 12	Qty 144	Size
90.476	90.476B	15TPI

Qty 12	Qty 144	Size
90.477	90.477B	10TPI

Qty 12	Qty 144	Size
90.478	90.478B	25TPI

### PINNED REGULAR 3" (75 mm):

Same as pinned Regular 5" but 3", adapted for some hobby saws.



Qty 12	Qty 144	Size
90.487	90.487B	25TPI

### PINNED HOOK 5" (130 mm):

Special scroll saw blade with extra wide gullets for rapid cutting. This blade works like a miniature band saw blade.



Qty 12	Qty 144	Size
90.485	90.485B	7TPI

### PINNED COPING SKIP 6.5" (165 mm):

For use in hand frames that require pinned end blades. The wide gullets allow you to cut work quickly.



Qty 12	Qty 144	Size
90.550	90.550B	18TPI

### PINNED COPING REGULAR 6.5" (165 mm):

For use in hand frames that require pinned end blades. Will cut a broad range of materials including ferrous and non-ferrous metal.



Qty 12	Qty 144	Size
90.551	90.551B	18TPI

Qty 12	Qty 144	Size
90.552	90.552B	20TPI

Qty 12	Qty 144	Size
90.553	90.553B	15TPI

Qty 12	Qty 144	Size
90.554	90.554B	10TPI

## 6-PIECE SET OF WOOD CARVING TOOLS

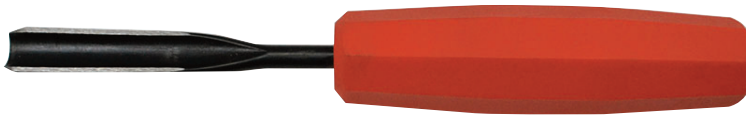
*Small tools for sculpture and carving,*

Various shapes available. Entire blade hardened 60 HRC. Ready to use. Sharpened with a 20° to 25° bevel for medium hard woods. The special octagonal shape of the plastic non-slip handle allows a firm, comfortable grip that won't roll off your bench. Overall length 7-5/8" (195 mm)

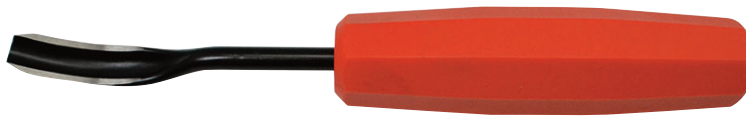
No. **52.251** Wood Carver, Narrow Medium Sweep



No. **52.252** Wood Carver, Large Medium Sweep



No. **52.253** Wood Carver, Bent Medium Sweep



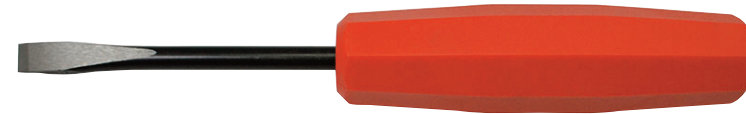
No. **52.254** Wood Carver, V Parting



No. **52.256** Wood Carver, Large Flat Chisel



No. **52.255** Wood Carver, Narrow Skew Chisel



No. **52.250** 6-piece Set of Wood Carving Tools

## 6-PIECE SET OF WOOD CARVING CHISELS

*Individually carded and with protective cap.*

Entire blade hardened 55-58 HRC. Ready to use. Sharpened with a single 25° bevel for medium hardwoods. Overall length 10" (250 mm).

Available with:

- Ergonomic plastic handle, safe grip with reinforced back for use with carving mallets.
- Suitable for: softwoods and hardwood

No. **52.281** Wood Chisel, 4 mm Blade

No. **52.282** Wood Chisel, 6 mm Blade

No. **52.284** Wood Chisel, 10 mm Blade

No. **52.286** Wood Chisel, 14 mm Blade

No. **52.289** Wood Chisel, 20 mm Blade

No. **52.291** Wood Chisel, 25 mm Blade

No. **52.280** 6-piece Set of Wood Carving Chisels





## AUGUR BIT RIFFLER FILE

A precision file by Grobet that complements a woodworker's file collection. One of the tapered ends has edges left safe or uncut; the other end has sides left uncut. The ability to file without damaging adjacent surfaces is the secret to successful sharpening, especially for auger bits. Built-in handle has rounded edges for improved safety. Overall length 7" (180 mm). *Made in Italy.*



No. **32.255**

## ERGO GRIP RASPS

The conveniently-sized Ergo Grip style is comfortable to use and available in five shapes. The built-in handle and balanced feel offer better control and increased productivity. Use to shape wood, fiberglass, plastics, or soft metals. Overall length 8-1/2" (215 mm). Available individually in the most popular shapes or as a set of five. *Made in Italy.*

No.	Style	No.	Style
<b>33.834</b>	Hand	<b>33.837</b>	Square
<b>33.835</b>	Half Round	<b>33.838</b>	Three Square
<b>33.836</b>	Round	<b>33.840</b>	5-Rasp Set



## GROBET RASP FILES

The raised individual cutting teeth are precise and efficient for use on hard and soft wood, fiberglass, plastics, and soft metals. Made using the latest CNC technology, these rasps simulate the cut of hand-cut rasps without the extreme expense. Ideal for shaping and finishing. *Made in Italy.*

### CABINET RASP NARROW

Length		Cut 4	Cut 5	Cut 6	Cut 7
(in)	(mm)				
10"	250	—	—	<b>30.965</b>	<b>30.966</b>

### CABINET RASP

Length		Cut 4	Cut 5	Cut 6	Cut 7
(in)	(mm)				
10"	250	—	<b>30.98805</b>	<b>30.98806</b>	—
12"	300	—	<b>30.99005</b>	—	—

### HALF ROUND RASP

Length		Cut 4	Cut 5	Cut 6	Cut 7
(in)	(mm)				
5"	127	—	—	<b>30.99206</b>	—
8	200	<b>30.99404</b>	—	—	—

### HAND RASP

Length		Cut 4	Cut 5	Cut 6	Cut 7
(in)	(mm)				
8	200	<b>30.99604</b>	—	—	—

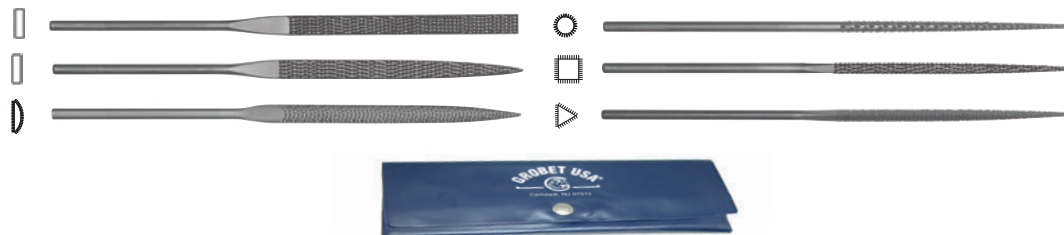
### ROUND RASP

Length		Cut 4	Cut 5	Cut 6	Cut 7
(in)	(mm)				
8	200	<b>30.99904</b>	—	—	—

## TEBORG® NEEDLE FILE RASPS

Designed for shaping wood, plastic, and wax. The wide-tooth style of these rasps does not clog as easily as conventional files. Overall length 5-1/2" (140 mm). *Made in Italy.*

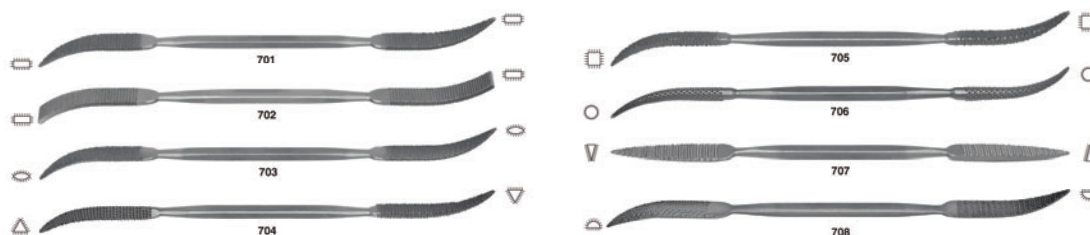
No.	Style No.
33.915	Equalling
33.916	Flat
33.917	Half Round
33.918	Round
33.919	Square
33.920	Three Square
33.922	6 Rasp Set



## RIFFLER RASPS

- Designed specifically for woodworking, finishing models, and sculpture
- Also excellent for roughing soft metals where a high stock removal is required
- Less clogging than standard rifflers
- Double ended, 0 cut. Length 7-1/2" (190 mm). *Made in Italy.*

No.	Style No.
32.098	#701
32.099	#702
32.100	#703
32.101	#704
32.102	#705
32.103	#706
32.104	#707
32.105	#708



## AMERICAN PATTERN FILES-PREMIUM

### FLAT FILE



This double cut file is tapered in width and thickness. **Double cut top and bottom – Both edges are single cut.**

Length	Width	Bastard Cut
8" 200 mm	3/16"	32.290P

### TAPER SAW, SINGLE CUT

The Taper Saw file is a triangular, single cut file designed for smoothing inside holes and making sharp corners. Tapered toward a point, this file has cut edges for filing gullets between saw teeth. **Single cut on all three sides.**

#### REGULAR TAPER



Length	Width	No.
6" 150 mm	1/2"	32.433P

#### SLIM TAPER



Length	Width	No.
6" 150 mm	9/32"	32.440P

## AMERICAN PATTERN FILES (Continued)



### FLAT

This double cut file is tapered in width and thickness. **Double cut top and bottom – Both edges are single cut.**

Length	Bastard Cut	Second Cut	Smooth Cut
6" 150 mm	<b>32.289</b>	<b>32.296</b>	—
8" 200 mm	<b>32.290</b>	—	<b>32.304</b>
10" 250 mm	<b>32.291</b>	—	<b>32.305</b>
12" 300 mm	<b>32.292</b>	—	—



### HALF-ROUND

Used for smoothing concave, convex, and flat surfaces as well as rounding out holes. This file is rounded on one side and flat on the other. **Double cut on both sides.**

Length	Bastard Cut	Second Cut	Smooth Cut
4" 100 mm	<b>32.309</b>	—	—
6" 150 mm	<b>32.310</b>	<b>32.318</b>	<b>32.325</b>



### MILL

The file of choice when a smooth finish is desired. The Mill file has many applications, such as; sharpening saws and tools, finishing metal, lathe work, draw filing as well as general shop use. **All sides are single cut.**

Length	Bastard Cut	Second Cut	Smooth Cut
4" 100 mm	<b>32.368</b>	—	<b>32.384</b>
6" 150 mm	<b>32.369</b>	<b>32.379</b>	<b>32.385</b>
8" 200 mm	<b>32.370</b>	<b>32.380</b>	<b>32.386</b>
10" 250 mm	<b>32.371</b>	<b>32.381</b>	—



### ROUND

When holes need enlarging and corners rounding, this round file is the solution. This file tapers, making it adaptable to a variety of hole sizes. **Double cut.**

Length	Bastard Cut
4" 100 mm	<b>32.395</b>
6" 150 mm	<b>32.396</b>



### WARDING

As the Warding file is thin, it is also suited for any application where the space is too narrow for other files to fit. This file tapers toward the end.

**Double cut top and bottom – Both edges are single cut.**

Length	Bastard Cut
6" 150 mm	<b>32.469</b>



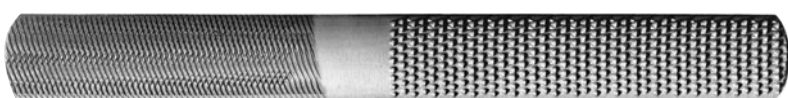
## AMERICAN PATTERN FILES (Continued)



### FARMER'S OWN FILE

General purpose file with rectangular shape. **One side double cut – One side single cut – One edge single cut – One edge is safe.**

Length	No.
8" 200 mm	<b>32.498</b>
10" 250 mm	<b>32.499</b>



### ALL PURPOSE FILE

For the homeowner, home craftsman, boat builder and this is just a great tool to keep handy. Half-round shape. Has file section and rasp section on both flat side and half-round side. **Both sides of file section are double cut – Both sides of rasp section are rasp cut.** This allows you to remove wood quickly with the rasp and smooth the rasp marks away with the file.

Length	No.
8" 200 mm	<b>32.502</b>

### ECONO DIAMOND NEEDLE FILE SET

Contains 5 assorted files in a handy vinyl pouch. Use these tiny abrasive files to touch up carving burs, router bits, and drill bits, as well as small carving tools.

No. **34.020**



### MASCOT® NEEDLE FILES

Single-cut files do not clog with wood as easily as double-cut files. Overall length 5-1/2" (140 mm). Smooth cut only. Sold individually. *Made in Italy.*



**EQUALLING**  
No. **33.860**



**WARDING**  
No. **33.861**



**HALF-ROUND**  
No. **33.862**



**ROUND**  
No. **33.863**



**SQUARE**  
No. **33.864**



**THREE-SQUARE**  
No. **33.865**



### MASCOT® NEEDLE FILE SET

Set of six different styles a vinyl pouch: equalling, warding, half-round, round, square, and three-square.

*Made in Italy.*

No. **33.867**



# GROBET® SWISS PATTERN PRECISION FILES

Made in Italy



## DEMI-NARROW PILLAR

Length (in) (mm)		Width (in) (mm)		Thickness (in) (mm)		Cut 0	Cut 1	Cut 2
6"	150	25/64"	10.0	11/64"	4.5	31.192	31.193	31.194



## SQUARE

A general purpose file, cut and usable to the point. Gradually tapered. **Double cut on all four sides.**

Length (in) (mm)		Width (in) (mm)		Cut 2
8"	200	9/32"	7.0	31.356



## THREE-SQUARE

Gradually tapered, cut and workable to the point. **Double cut on all three sides.**

Length (in) (mm)		Width (in) (mm)		Cut 0	Cut 2
8"	200	33/64"	13.0	31.377	31.379



## THREE-SQUARE SLIM

Same as Three-Square, except thinner, for working in smaller areas. **Double cut on all three sides.**

Length (in) (mm)		Width (in) (mm)		Cut 2
6"	150	19/64"	7.5	31.382



## VUL-CRYLIC

Double-end vulcanite file with open, coarse teeth. One end is coarser than the other. For fast wood removal and to smooth surfaces. **Double cut on both sides of coarse end. One side single cut and one side double cut on other end.**

Length (in) (mm)		Width (in) (mm)		Thickness (in) (mm)		No.
8"	200	17/32"	13.5	5/32"	4.0	31.384

# GROBET® RIFFLERS

Made in Italy



## DIE SINKERS' RIFFLER

Style No.	Cut 4
552	32.012

## TOOL MAKERS' RIFFLER

Made of chrome-alloy steel for corrosion resistance and long, efficient life. It is contoured to make difficult-to-reach areas readily accessible and is well balanced to facilitate delicate finishing work. Length is 12" (300 mm). **Doubled ended.**



Style No.	Cut 0
410	32.075

## HARD ARKANSAS BENCH STONES

Mounted, natural, high-quality close-density oilstones that make them unequalled for sharpening tools.

### No. 10.550

Grit Extra Fine  
Dimensions 3" x 1" x 1/2"

### No. 10.551

Grit Hard (Fine)  
Dimensions 4" x 2" x 1/2"



## ARKERAM BENCH STONE

Made from Arkansas stone powder, solidified by fire. Has more cutting action than regular Arkansas stones. Bench stone can be used on both sides with oil. Packed in hardwood box.

No.	Dimensions
10.608	4" x 1" x 1/2"

## SANDING DISC ASSORTMENT

Contains 25 fine, 25 coarse, and 50 medium, 7/8" discs, plus one mandrel, in compartmented plastic box.

No.	Dimensions
10.712	7/8"



## ZAM® BUFFING COMPOUND

Apply this compound directly to your leather strop or buffing wheel. Our favorite abrasive compound because it hones and polishes the edges of your carving tools fast without leaving a residue. ZAM will not stick to your tool or gum up your wheel. 1/4 lb. tube

No. 47.502



## INTERCEPT ANTI-TARNISH TABS

The ultimate protection for keeping your tools from rusting. Keep a few tabs in all of your toolboxes or drawers.

- Tabs absorb corrosive gasses that create rust
- Will not leave deposits on tools
- Non-toxic and non abrasive
- Provides protection for up to 12 months

No. 61.145 Non-Abrasive Tabs 1" x 1"



## HARD ARKANSAS SLIPS

Available in a variety of shapes and sizes to fit inside gouges.

No.	Shape	Dimensions
10.574	Beveled	3" x 3/8" x 1/8"
10.578	Pointed	4" x 1/4"



## COMBINATION GRIT BENCH STONE

Use both sides. Combination stone has fine grit on one side, coarse on the other.

Combination	Dimensions
10.450	4" x 1-3/4" x 5/8"



## SPLIT MANDRELS for HANDPIECE

Emery paper is wound around mandrel for polishing smaller pieces. Has 3/32" shank to fit in handpiece.

No.	Size
11.308	Straight 2-1/4" long
11.309	Tapered 2-1/4" long

## 3M™ 3-RADIAL BRISTLE DISCS

Great for removing burrs and softening sharp corners without changing the overall shape of the workpiece. Can be used individually or stacked.



No.	Grit or Mesh	Diameter	Color	Min
10.3501	80	3/4"	Yellow	48
10.3502	220	3/4"	Red	48
10.3503	400	3/4"	Blue	48

No. 43.158 Mandrel





## GROBET USA® FLEXIBLE SHAFT KITS

Economical workhorse, ideal for precision work. Ball-bearing motor runs smoothly, requires no lubrication. Full 1-year warranty.

**Kit Includes:** Motor, Foot pedal (34.368), Handpiece, and Shaft and Sheath



**C-300 with NO. 30 HANDPIECE (No. 34.367)**  
(accommodates shank sizes up to 5/32")

No.	Volt	HP	RPM
34.300	110V	1/10	18,000



**C-300 with NO. 30 HANDPIECE (No. 34.24307)**  
(accommodates shank sizes up to 1/8" and 1/4")

No.	Volt	HP	RPM
34.400	110V	1/10	18,000



**S-300 with 1/4" HANDPIECE (No. 34.235)**

No.	Volt	HP	RPM
34.635	110V	1/8	20,000



### ELECTRONIC FOOT PEDAL

Solid state control. Plastic housing.  
No. 34.368

### ADJUSTABLE FLEX SHAFT HOLDER

Attaches to bench and adjusts from 26" to 41" (63 to 104 cm). Swivels for easy flex shaft use.

No. 34.611



### DOUBLE HOOK FLEX MOTOR HANGER

Hang two of Grobet's Flex Motors to your bench or work space. Easily attaches to work bench. Swivels for easy flex shaft use. Adjustable from 27-1/2" to 41".

No. 34.613



## SLIM HANDPIECE

Thin body with a protective sleeve guard that slides back for changing tools easily.  
Supplied with 3/32" (2.4 mm) collet and collet wrench.  
No. **34.233**



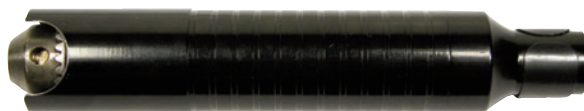
## QUICK CHANGE HANDPIECE

Quick release lever allows rapid changing of all burs & accessories with 3/32" (2.4 mm) shanks. Slim body for precise control.  
No. **34.263**



## HANDPIECE Y4

Opens up to 1/4" to accommodate accessories. Popular with wood working tools and other popular handheld motors.  
No. **34.235**



## COLLET HANDPIECE

Collet version of our general purpose handpiece. Collet wrench included.  
No. **34.243** Supplied with 3/32" (2.4 mm) collet.  
No. **34.24307** Handpiece for heavy duty use. 1/8" & 1/4" collets included.



## QUICK CHANGE HANDPIECE

Ergonomic design provides improved control and extra comfort. Quick change collet-release lever for use with 3/32" (2.4 mm) shanks.  
No. **34.246**



## QUICK CHANGE HANDPIECE

Economical quick change collet-release lever for use with 3/32" (2.4 mm) shanks.  
No. **34.262**



## MAGNA-GRAVER LINING AND STRAIGHT GRAVER

For easy, one-handed engraving with your flexible shaft machine. For craftsmen who engrave by hand and engravers on automatic or semi-automatic production lines, carvers, etc.

No. **36.02900**

## BRUSHLESS MICROMOTOR

- Compact design
- Strong Torque at low speed
- Minimal vibration
- Ergonomic and safe grip
- Self-diagnosis system
- Continuous variable-speed control
- Speed: from 1,000 to 50,000 rpm
- Reverse direction
- Power absorbed: 230 Watt
- Torque: 7.8 Ncm max
- Hand/Foot speed control
- Standard size collet: 3/32" (2.35 mm)
- With 220V Switch



No. **34.545** Brushless Micromotor

No. **34.54501** 3MM collet

## N7 MARATHON MICROMOTOR

- Automatic safety overload protection system
- Speed: 40,000 rpm
- Torque: 4.5 Ncm
- Strong torque at low speeds
- Forward and reverse direction
- Quick response variable-speed control
- Foot pedal included
- Standard size collet: 3/32" (2.35mm)
- Built-in handpiece holder
- Dust-proof switch cover



No. **34.525**

## K-35 CUBE MARATHON MICROMOTOR

- Economical
- Easy to use
- Small footprint
- Speed: 35,000 rpm
- Torque: 3.2 Ncm
- Strong torque at low speeds
- Fixed foot pedal
- Standard size collet: 1/8" (3mm)
- Built-in handpiece holder
- Bur holders drilled on top for easy-access bur storage

**Marathon - the name you have trusted and relied on for years**

No. **34.540**

No. **34.541**: reducing sleeve to go from 1/8" collet to 3/32" burs



## PÉGAS® WOODWORKING ROTARY TOOL ACCESSORY KIT

This package of sanding and finishing tools works great for any rotary tool.

### Disc and Bands

- No. **11.220** - No-lap Abrasive Band, 3/8" fine
- No. **11.221** - No-lap Abrasive Band, 3/8" medium
- No. **11.222** - No-lap Abrasive Band, 3/8" coarse
- No. **11.718** - Sanding Disc, coarse
- No. **11.719** - Sanding Disc medium
- No. **11.720** - Sanding Disc fine
- No. **10.3501** - 3M Bristle Disc, 3/4" Grit 80
- No. **10.3502** - 3M Bristle Disc 3/4" Grit 220

### Mandrel

- No. **10.740** - Yellow Sanding Disc
- No. **11.308** - Split Pin
- No. **11.309** - Taper Split Pin
- No. **11.205** - No-lap

### Panther Burs

- No. **77.1045** #6
- No. **77.1550** #1

No. **34.850**







### 3M™ VETRAP

Natural latex rubber adheres to itself, not to your skin. It protects skin from burns and abrasions. Provides excellent gripping ability especially for small workpieces. Wrap is light and durable. Individual roll: 2" x 5 yds. 018.

No.	Color
10.3570	Pink
10.3571	Red
10.3572	Green
10.3573	Blue



### SAFETY TAPE

Lightweight but strong. Protects skin from cuts and burns. Open mesh allows skin to breathe. Just wrap around twice for full protection 3/4" by 90°. Sold in package of 16 rolls.

No. 47.532

### SET OF 12 RUBY CRYSTAL POINTS

Fast cutting, tough points and cones to add fine details to your carving. Shapes are securely mounted on 3/32" mandrels for use on flexible shaft machines. Contains one each of the most popular points:



Dia.	.083	.149" to .058"	.189"	.117	.309"	.370"
Head Length	.278"	.245"	.080"	.259"	.113"	.180"
No.	11.502	11.507	11.508	11.510	11.512	11.513

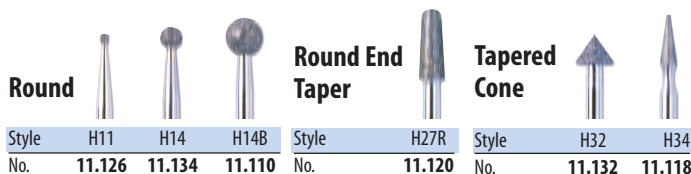


Dia.	.210"	.485"	.205"	.130" to .185"	.186"	.250"
Head Length	.187"	.090"	.282"	.520"	.285"	
No.	11.518	11.520	11.524	11.525	11.526	11.530

No. 11.500 Set of 12 Points

### DIAMOND POINTS *Mounted on 3/32" Shanks*

Long-lasting, high-quality industrial grade diamond points. Highly effective for fine detail work, enlarging holes and carving of all types, including ceramics. Use with a light touch at 10,000 RPM. 120/140 Grit.



Style	H11	H14	H14B	Style	H27R	Style	H32	H34
No.	11.126	11.134	11.110	No.	11.120	No.	11.132	11.118



Style	H20	H22	Style	H25	Style	H31	Style	H34	H33
No.	11.114	11.116	No.	11.133	No.	11.137	No.	11.127	11.123

### 3M™ SCOTCHBRITE™ HAND PADS

Excellent for wood finishing, paint prep, and general cleaning. Available in four grades as shown. Size is 6" x 9" Sold in boxes of 20.



No.	Grade	Color	No.	Grade	Color
10.302	Super Fine	White	10.301	Medium	Green
10.304	Very Fine	Maroon			
10.305	Ultra Fine	Gray			

### SANTAPER STICKS

Fast, easy, economical way to reach detailed, hard-to-reach areas.

Plastic stick, tapered at the end, holds a replaceable 1/4"-wide sanding belt. Sold individually.



No.	Color	Grit
11.571	Red	120
11.572	Blue	240
11.573	Green	320



### SANTAPER BELTS

The aluminum oxide belt is held in place by a patented spring-loaded mechanism that allows the belt to be rotated 360°. Rotating the belt exposes a new sanding surface and allows the entire belt to be used. Sold in packs of 10.

No.	Grit	No.	Grit	No.	Grit
11.576	120	11.577	240	11.578	320

### SANTAPER KIT (not shown)

Includes three sticks and fifteen belts, three each of all five grits. No. 11.570

### SET OF 20 MINIATURE ASSORTED DIAMOND BURS

This assortment of 150-grit diamond impregnated rotary burs, mounted on 3/32" shanks, features a variety of 20 different types: cylinder, tree, ball, cone, wheel, and flame.

File and carve your glass, ceramics, plastics, wood, precious metals, and more. Includes convenient plastic carry case.

No. 19.125

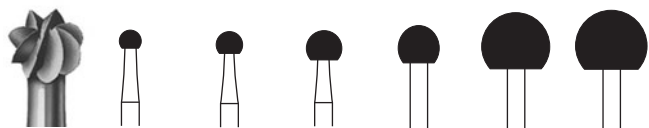


# PANTHER MINIATURE BURS 3/32" Shank

(sold in multiples of 6)



## ROUND - Figure 1



Size	2.9mm	3.5mm	4.5mm	5.5mm	9mm	9.5mm
No.	77.1029	77.1035	77.1045	77.1055	77.1090	77.1095



## INVERTED CONE - Figure 3



Size	2.7mm
No.	77.1827

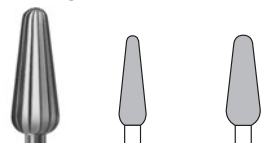


## BUD - Figure 6



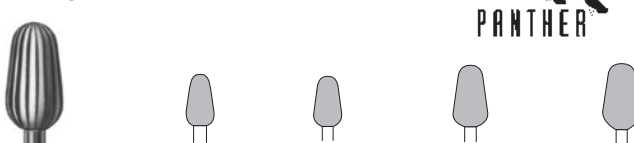
Size	3.3mm	5mm
No.	77.1533	77.1550

## BUD - Figure 79



Size	040	050
No.	77.3340	77.335

## BUD - Figure 75



Size	050	060	070	080
No.	77.3250	77.3260	77.3270	77.3280



## CONE - Figure 5



Size	3mm
No.	77.1630



## CONE SQUARE PLAIN Figure 17



Size	1.8mm
No.	77.3718



## CONE SQUARE, CROSS CUT Figure 23



Size	2.1mm
No.	77.2221



## CYLINDER, CROSS CUT Figure 21



Size	2.1mm
No.	77.2121



## KNIFE EDGE CUTTER - Figure 249



Size	10mm
No.	77.1396



## CYLINDER SQUARE PLAIN Figure 15



Size	2.7mm
No.	77.3527



## MINIATURE CARBIDE BURS 3/32" Shank (2.4 mm)

Once you try these, you'll never use old-fashioned steel burs again! Long-lasting carbide combined with a new alternate diamond cutting technique on most of these burs provides benefits never before possible. See illustration below for stock numbers.

### Benefits:

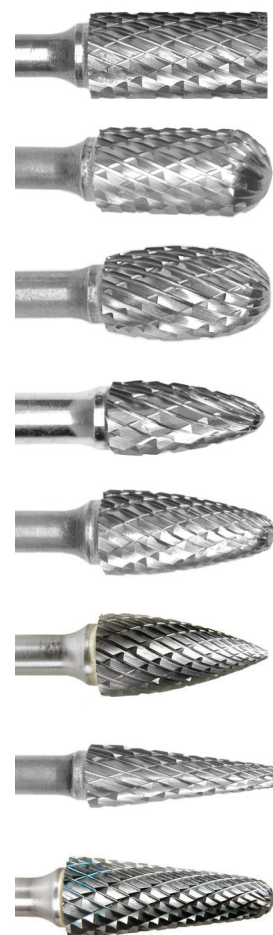
- Fast material removal with minimal clogging
- Reduced vibration
- Long tool life
- Smooth cutting action
- Minimum heat build-up
- Maximum tool control



## GROBET USA® BEAR CUT CARBIDE BURS 1/4" SHANK

The deep flutes on these double-cut burs give the perfect blend of speed and smooth cutting in hard and soft woods. They produce smooth cuts without burning in even the hardest woods, and don't clog when carving the softest woods.

SCTI	Shape	Head Dia	Head Length	OAL	Shank	Degree	No.
SA5	Cylinder Plain End	1/2"	1"	2-3/4"	1/4"		<b>32.555SY</b>
SC5	Cylinder Radius	1/2"	1"	2-3/4"	1/4"		<b>32.621SY</b>
SE5	Oval	1/2"	7/8"	2-5/8"	1/4"		<b>32.666SY</b>
SF3	Tree Radius	3/8"	3/4"	2-1/2"	1/4"		<b>32.705SY</b>
SF5	Tree Radius	1/2"	1"	2-3/4"	1/4"		<b>32.708SY</b>
SG5	Tree Pointed	1/2"	1"	2-3/4"	1/4"		<b>32.693SY</b>
SL3	Cone Radius	3/8"	1-1/16"	2-13/16"	1/4"	14°	<b>32.726SY</b>
SL4	Cone Radius	1/2"	1-1/8"	2-7/8"	1/4"	14°	<b>32.729SY</b>



## 1/4" SHANK 8-PIECE SET

This complete set of our most popular carbide bits (shown above) comes with a wooden case to keep them in excellent shape.

No. **32.931SY** - Bear Cut Set



## GROBET USA® ULTRASONIC MINI CLEANER

This tabletop ultrasonic cleaner works great to clean out bits and burs. The gentle sound waves loosen debris and sawdust without damaging the finest bits. Use with water and a little soap for moderately dirty bits, or use Magic Green ultrasonic cleaning concentrate to remove burned-in wood. Efficient solid state circuitry with a three-minute auto off timer. Includes plastic basket and cover. Output power: 35W. Timer setting: 3 minutes.



No.	Capacity	Volts	Shipping Weight	Length	Tank Dimensions	
					Width	Depth
23.598	2 qt.	110V	1 lbs. 12 oz.	8"	5"	5-1/2"

## MAGIC GREEN ULTRASONIC CLEANING CONCENTRATE

One ounce of concentrated granules mixed with one gallon of water form a fast acting solution. Biodegradable, with no ammonia, this compound will attack burnt in sawdust and grit instantly. Long-lasting, with no evaporation.



No. 22.608 – 8 oz. jar makes 8 gallons of solution

## ATTACK GLUE DISSOLVING CLEANSER

Remove tough epoxy and glue from your rasps, bits, pen mills, spreading tools, or mixing containers. Clean out small deposits quickly. Thick coatings of glue or epoxy may require a longer soak. Even removes cured resins. 8 fl. oz. can.



No. 38.325

## PLASTIC HANDLE BIT CLEANING BRUSH

4 rows of stiff nylon bristles remove wood from fluted bits without damaging the bit. Brush measure 3" long and 1/2" wide. Overall length is 7-1/2".

No. 16.098



## BRASS SCRATCH BRUSH with WOOD HANDLE

Brush has four rows of .003" wire to clean out tough burned-in wood. Brush is 3-1/4" long x 3/4" wide. Overall length 8-1/4".

No. 16.310



## MUCILAGE and ACID BRUSHES

Use to apply glue or to clean dust out of tight areas. Stock up on these versatile extra stiff black horsehair brushes. Sold by dozen.

No.	Measurements
16.250	3-1/4" long x 1/4" diameter
16.251	5-3/4" long x 3/8" diameter
16.252	5-3/4" long x 1/2" diameter



## FILE CLEANER

Steel wire bristles mounted on wood handle, for removing particles clogging teeth of file. Overall length 10" (250 mm).

No. 33.981





## DORMER HIGH SPEED TWIST DRILLS

Made of the highest quality steel, carefully tempered and accurately ground to size. All drills have straight shanks and are perfectly finished to assure quick, smooth, and clean drilling. Individual sizes, Sold in packs of 10.

No.	Size Code	Size	No.	Size Code	Size	No.	Size Code	Size	No.	Size Code	Size
28.0536/50	50	.0700"	28.0536/60	60	.0400"	28.0536/68	68	.0310"	28.0536/76	76	.0200"
28.0536/51	51	.0670"	28.0536/61	61	.0390"	28.0536/69	69	.0293"	28.0536/77	77	.0180"
28.0536/52	52	.0635"	28.0536/62	62	.0380"	28.0536/70	70	.0280"	28.0536/78	78	.0160"
28.0536/54	54	.0550"	28.0536/63	63	.0370"	28.0536/71	71	.0260"	28.0536/79	79	.0145"
28.0536/55	55	.0520"	28.0536/64	64	.0360"	28.0536/72	72	.0250"	28.0536/80	80	.0135"
28.0536/57	57	.0430"	28.0536/65	65	.0350"	28.0536/73	73	.0240"			
28.0536/58	58	.0420"	28.0536/66	66	.0330"	28.0536/74	74	.0225"			
28.0536/59	59	.0410"	28.0536/67	67	.0320"	28.0536/75	75	.0210"			



## MASCOT® HIGH SPEED STEEL TWIST DRILLS

These miniature drill bits are all that you need to drill blade entry holes for even the finest fetwork. Sold in packs of 10.

No.	Size Code	Size	No.	Size Code	Size	No.	Size Code	Size	No.	Size Code	Size
28.550/10	50	.0700"	28.558/10	58	.0420"	28.566/10	66	.0330"	28.574/10	74	.0225"
28.551/10	51	.0670"	28.559/10	59	.0410"	28.567/10	67	.0320"	28.575/10	75	.0210"
28.552/10	52	.0635"	28.560/10	60	.0400"	28.568/10	68	.0310"	28.576/10	76	.0200"
28.553/10	53	.0595"	28.561/10	61	.0390"	28.569/10	69	.0292"	28.577/10	77	.0180"
28.554/10	54	.0550"	28.562/10	62	.0380"	28.570/10	70	.0280"	28.578/10	78	.0160"
28.555/10	55	.0520"	28.563/10	63	.0370"	28.571/10	71	.0260"	28.579/10	79	.0145"
28.556/10	56	.0465"	28.564/10	64	.0360"	28.572/10	72	.0250"	28.580/10	80	.0135"
28.557/10	57	.0430"	28.565/10	65	.0350"	28.573/10	73	.0240"			



## DORMER HIGH SPEED TWIST DRILL ASSORTMENT

Set of 6 drills sizes code 55, 56, 59, 60, 64, and 67 in a handy plastic tube. Excellent for sample making and general workshop use.

No. 28.0545



## MASCOT® ASSORTMENT OF 6 DRILLS

Set of 6 bits including Nos. 50, 56, 60, 65, 70 and 76.

No. H86



## MASCOT® 1 DOZEN ASSORTED DRILLS

Set of 12 bits from No. 50 to No. 80.

No. H178



## MASCOT® 20-PIECE CARBON TWIST DRILL SET

Set of 20 bits with a base and plastic cover marked with drill sizes. Bits range in size from No. 61 to No. 80

No. H177



## PÉGAS® ADAPTER CHUCK WITH TWO COLLETS

Transform your Pegas Woodworking high-speed rotary tool into a high speed drill with this chuck featuring a 3/32"-diameter shaft. This micro chuck allows you to use bits from #80 up through #40 (3/32"). Made in the USA.

No. **28.216**



## PÉGAS® EASY-CLAMP CHUCK

Chuck even the smallest bits securely in your drill press or hand drill. Featuring a solid 1/4"-diameter shaft that isn't going to get bent out of shape in a drill chuck, this tool allows you to use bits as small as #80 up to 1/8".

No. **58.325**



## MASCOT SPIRAL PUSH DRILL

A much smaller version of a drill used for over a century. The simple push down handle smoothly rotates the shaft and turns the drill. Spring action pushes the handle back up and its ready to go again! Drill holes in the middle of the largest blanks; you'll be amazed at how effortless this drill is to use. Length is approximately 7-3/4" with a drill capacity of 0 to 1.0 mm (#60 drill).

No. **H841**



## SWIVEL HEAD PIN VISE

Large, free-wheeling head. Suitable for drilling, tapping, or using as a screwdriver. Two double-ended collets, one in screw chuck and the other stored in the handle. Capacity 0 to .125" (0 to 3.2 mm). Overall length 3-1/2" (89 mm)

No. **58.221**

## AUTOMATIC PUNCH

Adjustable tension. Heavy-duty metal. 5-1/2" long with knock out point. Knurled handle for easy grip. Useful for centering in metal or plastic.

No. **47.216**





## WOODCARVER'S BENCH

This bench, designed for watchmakers, features a solid hardwood top with a lip to keep tools from rolling onto the floor. It also features a variety of drawers to keep all of your tools in easy reach.

- Solid wood top with railing
- Full-length side and back panels
- 15 drawers in a range of sizes to keep tools organized
- 19" wide catch tray for catching bench sweeps
- Ships in 2 boxes

No. **13.073**



## UNIQUE BENCH PIN

The bench pin that provides various options and maximum support for all your hand fretsaw needs. Take your scrolling anywhere with this clamp-on pin and a precision fretsaw. (See page 4)

- Two oblong sawing slots
- Square and round slots for filing support
- Unique V-slot cutout

No. **13.298**

## GROBET SHARP POINTED TWEEZERS

Dig out the most stubborn splinters with these precision sharp pointed tweezers. Nickel-plated steel.

No. **57.0301** - PATTERN AA



## GROBET UTILITY TWEEZER

Grab that splinter before it gets driven too deeply, or use these tweezers to grab almost anything. They are especially good for grabbing an errant hair or dust particle from your just-applied finish. Nickel-plated steel.

No. **57.710** — Small indented square/serrated tip

## CARVERS & SPATULAS FOR CLAY MODELING

### CARVER No. 1

No. 21.110 6-1/2"



### CARVER No. 6

No. 21.116 6-1/2"



### CARVER No. 2

No. 21.111 6-1/2"



### CARVER No. 50

No. 21.117 6-1/2"



### CARVER No. 1/2

No. 21.113 6-1/2"



### SPATULA No. 31

No. 21.160 7-1/4"



### CARVER No. 3

No. 21.114 6-1/2"



### SPATULA No. 5

No. 21.163 8"



### CARVER No. 5

No. 21.115 6-1/2"



### SPATULA No. 35

No. 21.161 7-1/4"



## SET of SIX POPULAR CARVERS & SPATULAS

Consists of No. 21.114, 21.115, 21.116, 21.141, 21.251 and 21.252.

No. 21.100





## CRAFTSMEN'S KNIFE & TOOL SET

28-piece set in handsome wood chest with molded storage trays. Contains lightweight knife, medium-weight knife, heavy-duty knife, awl, miter box, razor saw, sander, screwdriver, and 20 assorted blades.

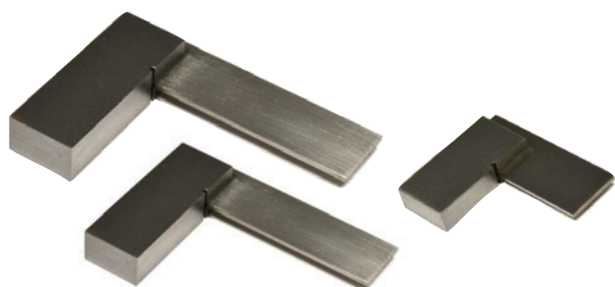
No.	Description
39.268	28-piece set



## CRAFTSMEN'S KNIFE SET

13-piece set contains three knives plus ten assorted extra blades. Knives are lightweight, medium-weight, and heavy-duty. The blades include one each of #'s 16, 19, 24, and 25 and two each of #'s 11, 22, and 23. Packed in plastic display case.

No.	Description
39.267	13-piece set



## PRECISION STEEL SQUARES

Tool steel, with precision ground edges, lapped beams, and blades. Beams and blades are hardened, ground, and lapped to insure parallelism and straightness. 90° angles inside and out, for close tolerance measurements and precise work. Body and Tongue are 3/4" wide.

No.	Size
35.141	1"
35.142	2"
35.143	3"



## DENIM APRON

Comfortable and durable blue denim apron with breast and waist pocket. 28" x 36".

No. 47.306



## RAWHIDE MALLETS

Heads are made of the finest quality rawhide embedded in shellac for added durability. Mounted on hardwood handle. Will not mar or scratch. Great value!

No.	Style No.	Face Diameter		Length		Head Weight	
		(in)	(mm)	(in)	(mm)	(oz)	(g)
37.701	1	1-1/4"	32	2-3/4"	70	4	113
37.702	2	1-1/2"	38	3"	76	6	170
37.703	3	1-3/4"	44	3-1/8"	79	9	255



## DEAD BLOW HAMMERS

- Steel shot-filled head provides extra striking force with less bounce-back than solid-head hammers
- High impact poly jacket surrounds head, preventing marring
- Diamond textured handles for non-slip grip
- Non-sparking; Ideal in automotive applications

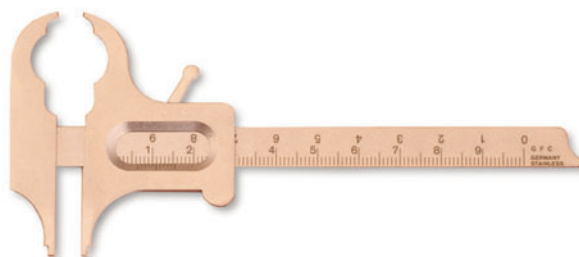
No.	Description	No.	Description
37.223	1.64" dia. 0.5 lb 10-1/2"	37.225	1.96" dia. 1.5 lb 12-1/4"
37.224	1.72" dia. 1.0 lb 11-1/2"	37.226	2.08" dia. 2.0 lb 13"



## BOLEY STYLE SLIDING GAUGE with LOCKING LEVER

Stainless steel, millimeter gauge with capacity of 100 mm and vernier reading to 0.1 mm. Cut out jaws for measuring different shapes.

No. 35.170



## COLUMBUS STYLE VERNIER CALIPER

Economical quality gauge measures in metric and inch. Capacity 5" (125 mm). Vernier reads to 1/128" and 1/10 mm. Has thumb roller and locking screw. Jaws measure inside and outside and there is a depth gauge in the end.

No. 35.174



## INSTANT READOUT PRECISION DIGITAL CALIPER

Made of stainless steel. Measures inside and outside in inches and millimeters. Capacity 0-6" with .001" resolution, or 0-150 mm with 0.01 mm resolution. Includes zero set button and depth measuring rod. Protective carrying case and battery included.

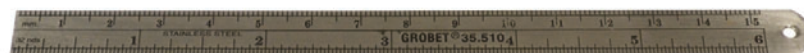
No. 35.180



## STAINLESS STEEL FLEXIBLE RULER

Graduated in millimeters across the top and 1/32" increments across the lower half. All graduations are deeply etched. 6"L x 1/2"W.

No. 35.510





## WILLSON DUST RESPIRATOR N9510

Half-face-mask respirator provides excellent protection from non-oil-based particulates. Adjustable nose clip helps ensure a secure seal and a personalized fit. Elastic latex-free two-strap headband. Designed for grinding, sanding, sweeping, and other dust-creating tasks.

No. 47.304 Half-face-mask respirator

## 3M™ PARTICULATE AND WELDING RESPIRATORS

Innovative respirators from 3M feature patented technologies. The N95 classification means 95% of particles down to 0.3 microns are screened out. Observe manufacturer recommendations regarding usage.

- A.) **Cool Flow Exhalation Valve:** Patented one-way valve for easy exhalation and cool, dry comfort.
- B.) **M-Noseclip:** Adjusts easily for fewer pressure points and greater comfort.
- C.) **Electret Media:** Advanced electrostatically charged microfibers help make breathing easier and cooler.
- D.) **3M Welding Web:** Fiber media is flame resistant. Not a substitute for a faceshield.



### RESPIRATOR – 3M™ 8511

Features A, B, & C listed above.

No. 10.387



### WELDING RESPIRATOR – 3M™ 8515

Features A, B, C & D listed above.

No. 10.388



### PARTICULATE RESPIRATOR – 3M™ 9211

Flat folding. Features A, B, & C listed above.

No. 10.389

## SAFETY GLASSES



### CLEAR POLYCARBONATE LENSES

Lightweight nylon black frame with soft PVC nose piece. Molded-in side protection offers increased coverage for side impact. Adjustable temples lock into place. Impact resistant polycarbonate lenses provide 99.9% UV protection. Meets ANSI Z87.1 specifications.

No. 29.011



### CLEAR GLASS ASPEN-STYLE

With clear glass. Will fit over most standard frames. Clear glass

No. 29.009



## MAG-SAFE™ BIFOCAL and FULL LENS GLASSES

Avoid the high cost of prescription safety glasses. These corrective lenses are combined with safety glasses for close-up work. Both Bifocal and Full Lens are available in diopters 1.00 through 2.50 in .25 increments. These glasses compare to drug store "readers" while conforming to ANSI Z87.1 2003 specifications for high impact protection. Check with your eye doctor for the best diopter model for you.

Full Lens Part Number	Diopter
29.811	1.25
29.812	1.50

Full Lens Part Number	Diopter
29.814	2.00
29.816	2.50



## 2 LED ILLUMINATING HEADBAND MAGNIFIER

- Detachable LED light source
- 11 different magnifications
- Single-plate lens: 1.0X, 1.5X, 2.0X, 2.5X, 3.5X
- Bi-plate lens: 3.0X, 4.0X, 4.5X, 5.0X, 5.5X, 6.0X
- Magnifications are marked in the middle of lens
- Handy storage box

No. **29.568** – 1-way adjustable headband

No. **29.569** – 2-way adjustable headband

## GROBET USA® PROFESSIONAL LED BENCH LAMP

### with Dimmer Switch

The innovative design enables the user to raise, lower, or tilt, to direct the light source quickly and efficiently. Perfect for precision work!

- 84 White LED Bulbs
- Ergonomic design
- Easy to adjust
- Includes bench clamp
- Multi-function dimmer switch for lighting versatility
- Shadow-free light with low-heat emission
- Energy efficient
- Lamp height is 30"
- 1100 Lumens
- 21 Watts

No. **13.109** (110v)



## BENCH LAMP

Suitable for workshop or desktop use.

Three Fluorescent bulbs provide ample illumination.

The innovative design allows the user to raise, lower, or tilt, directing the light source quickly and efficiently onto workpiece.

No. **13.110** (110v)





## GROBET USA® INSPECTION LAMP



- Illuminated magnifier provides hands-free viewing
- Magnification 1.75X
- Adjustable arm provides light source to work area quickly and efficiently
- Convenient clamp is suitable for workbench or desktop
- Metal construction
- Color: White
- Supplied with a 22-watt circline fluorescent bulb (No.13.140)

No. 13.125

## LED INSPECTION LAMP



- Bright LED lights, 90 bulbs
- Convenient clamp is suitable for workbench or desktop
- 1-3/4x Magnification
- Adjustable arm
- Flip-up lens cover
- Metal construction
- Color - White

No. 13.115

## LED TABLE TOP INSPECTION LAMP

- Bright LED lights, 72 bulbs
- 1-3/4X Magnification
- Moveable arm
- Flip-up lens cover
- Weighted base
- Sturdy construction
- Color - White



No. 13.116

## LED DOUBLE REACH CLAMP LAMP W/BASE

- Shade: Plastic Construction
- Dimensions: 20" L (50.8 cm) X 6" W (15.2 cm) X 22" H (55.9 cm)
- Switch: Touch • Dimmer: Full Range
- Light Source: LED, SMD
- Watts: 10 watts
- Lumens: 600, (Not Title 20 Compliant)
- CRI: 80+ • Beam angle: 60 degrees
- Adjustable Color: Soft White, Bright White, Daylight
- Other: Clamp accessory included



No. 13.127 Black, 110V

## PÉGAS® SCROLL SAWBLADE DISPLAY PACKAGE

Contains 6 dozen or 12 dozen of 18 different Pégas sawblades.

Includes:

- Skip 2/0, 2, 5, 7, 9
- Skip Reverse 3R, 5R, 7R
- Double Skip Reverse 5R, 7R, 9R
- Modified Geometry 3SPR, 5SPR, 7SPR
- Pinned Regular 15TPI
- Spiral 2/0, 2, 4

Item No. **90.WD6** - 6 dozen

Item No. **90.WD12** - 12 dozen

The Pégas display is constructed of durable wire to withstand every retail environment.

The Pégas display can be placed on a counter or hung on slatwall or pegboard. Its attractive design will invite your customers to browse. Product information is printed clearly on the small banner for easy customer selection.

Pégas specialists have carefully selected 6 different types and 18 most popular sizes of Pégas Scroll sawblades to fill the display - Skip, Skip Reverse, Double Skip Reverse, Modified Geometry, Pinned Regular, and Spiral.

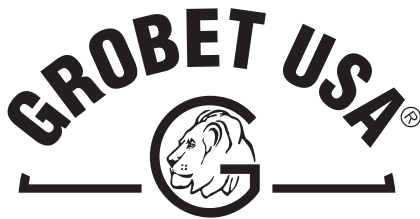
All Pégas Scroll sawblades are packed by the dozen in colorful minigrip polybags. Polybags maintain their strength and attractive appearance over time.



Pégas Part #	Model	UNIV. #	Thick (in)	Width (in)	TPI
90.400	Skip	2/0	0.0078	0.026	28
90.403	Skip	2	0.0110	0.033	20
90.406	Skip	5	0.0145	0.043	16.5
90.408	Skip	7	0.0150	0.05	15
90.410	Skip	9	0.0160	0.055	13
90.428	Skip Reverse	3R	0.0130	0.035	13/7r
90.429	Skip Reverse	5R	0.0180	0.045	12/9r
90.430	Skip Reverse	7R	0.0180	0.045	10/7r
90.432	Double Skip	5R	0.0180	0.045	12/8r
90.433	Double Skip	7R	0.0180	0.045	10.5/r
90.434	Double Skip	9R	0.0180	0.045	9/6r
90.440	Modified Geometry	3SPR	0.0125	0.033	13/7
90.441	Modified Geometry	5SPR	0.0150	0.037	13/7
90.442	Modified Geometry	7SPR	0.0170	0.043	10/7
90.476	Pinned Regular 5"		0.0200	0.118	15
90.500	Spiral	2/0		dia. 0.027	56
90.503	Spiral	2		dia. 0.037	45
90.505	Spiral	4		dia. 0.042	38



Precision Scroll Saw  
21"/535 mm



Phone: 800-847-4188 • 800-998-4467

Fax: 800-243-2432 • 800-758-4467

<http://www.grobetusa.com/woodworking>

email: [pegas@grobetusa.com](mailto:pegas@grobetusa.com)

Pégas

MP NO	EX-01
POWER SUPPLY	110V/60Hz, 1.5A, 120W
CUTS PER MIN	800-1500
SERIAL NO	

Grobet USA  
750 Washington Avenue, Carlisle  
Tel: 800-847-4188  
[www.grobetusa.com](http://www.grobetusa.com)

Pégas®